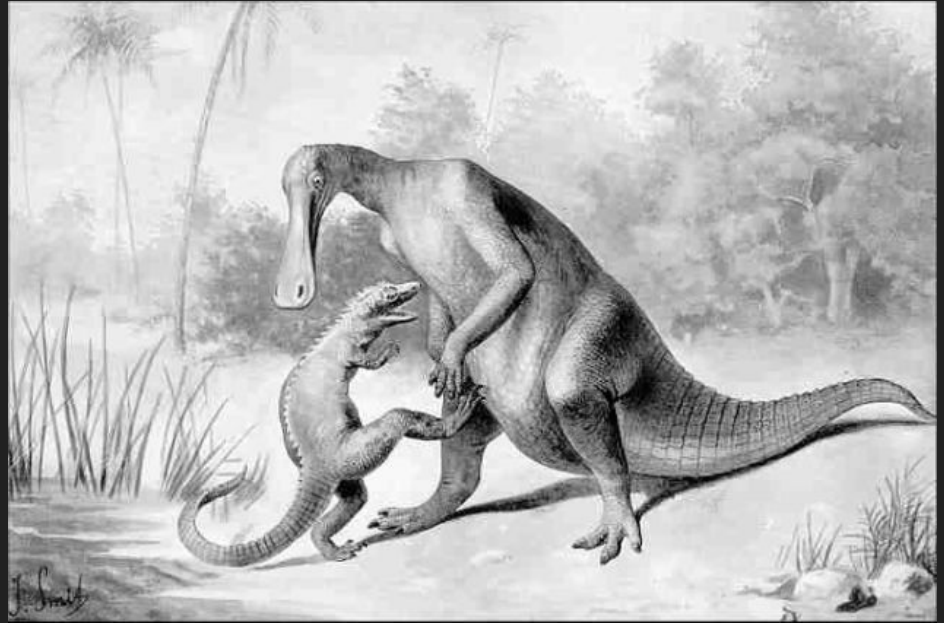


Durer and Naturalists

Read the passage at the top of my “Scientific Illustrations” page and answer the following questions



1)What is a Scientific Illustration?

2)Why do you think in victorian era (late 1800) scientific illustrations were popular? Consider this picture... why would a english middle class victorian era gentleman be intrigued by this piece?



3) What invention of the late 1800 do you think changed or hindered the scientific illustration field. Why do you think it affected them?

4)How was DURER able to create his detailed Rhino drawing even though he never saw the animal?

5) Compare the drawing Durer did with a photo of an Indian Rhino. What are some things Durer got wrong in his illustration?

6) What are some things he did get accurate?

7) Why do you think this wasn't 100 percent an accurate illustration of a rhino, how could he have gotten it right?

8) Why do you think it is important that you use your reference picture when digitally painting your Scientific Illustration?

