

Linear Brushstrokes

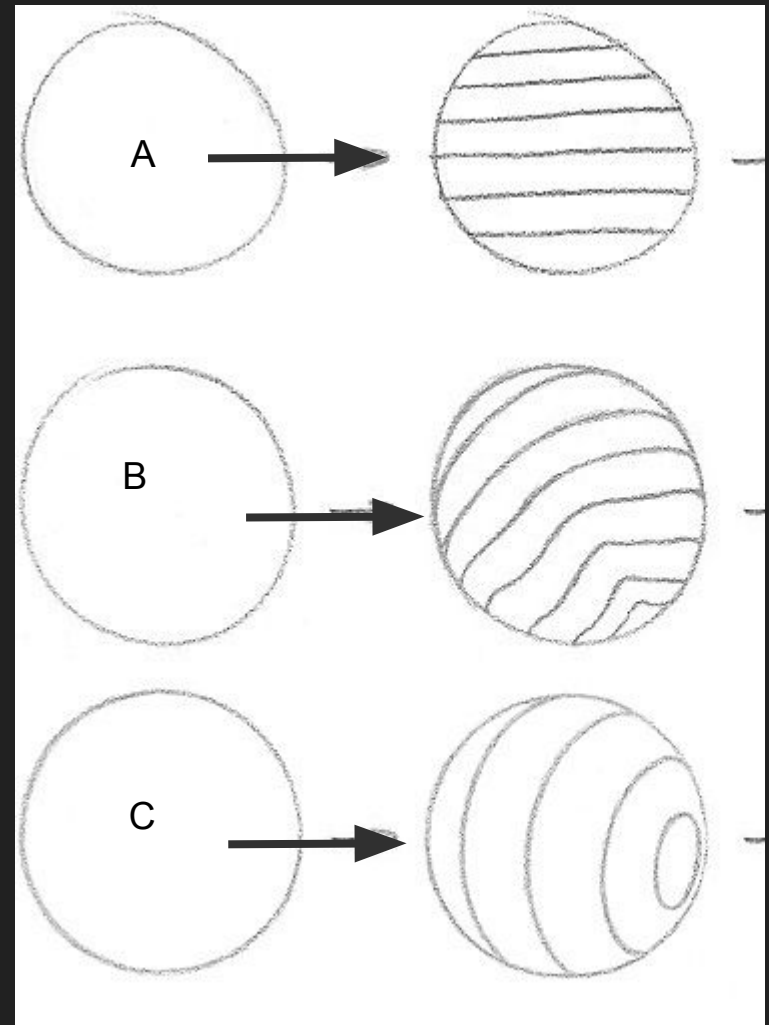
Which example or examples have a feeling of Form? why

What is form and how is it different from Shape?

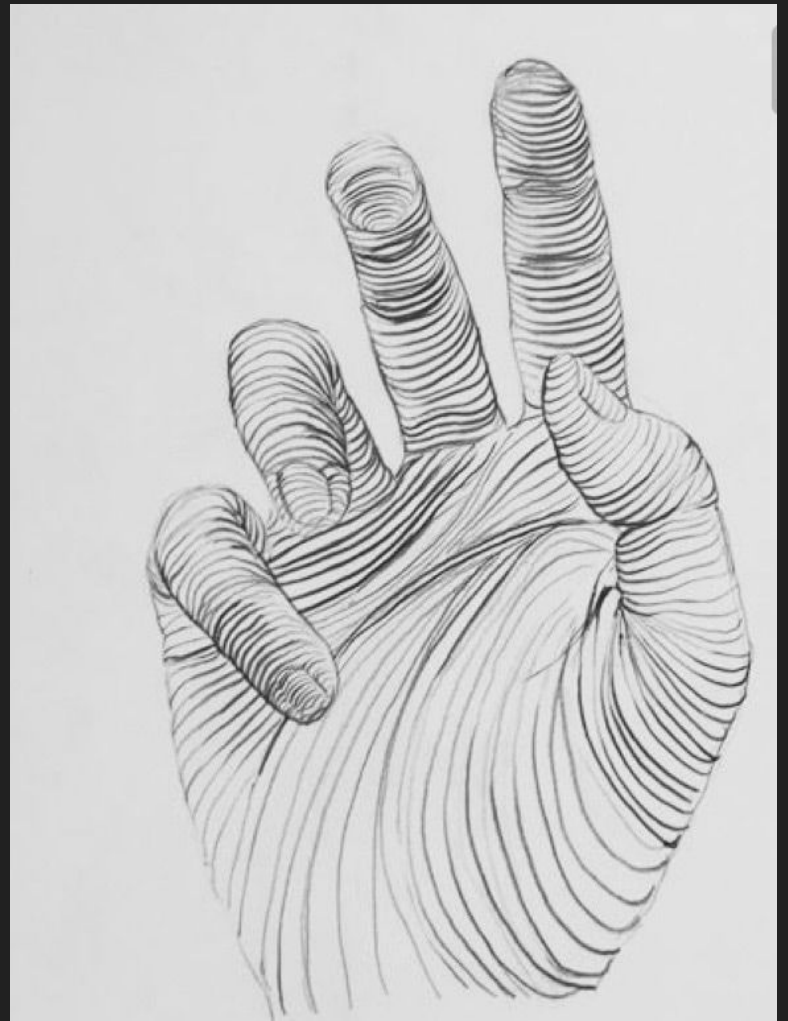
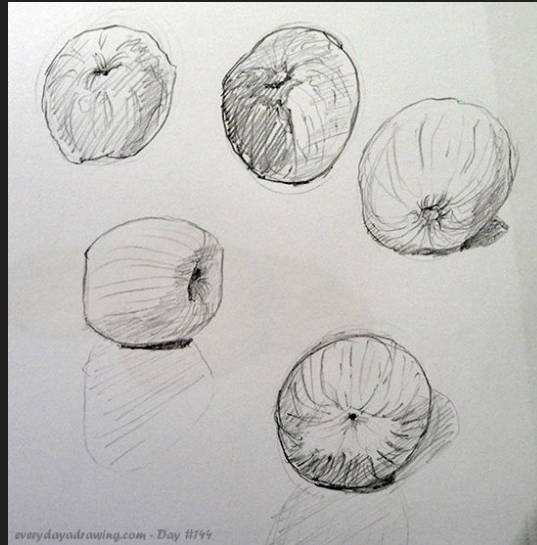
Which one looks flat

Which appears to be a ball and why

Which one like it got kicked in?



For Lines to help create the illusion of form what do the line work have to follow?



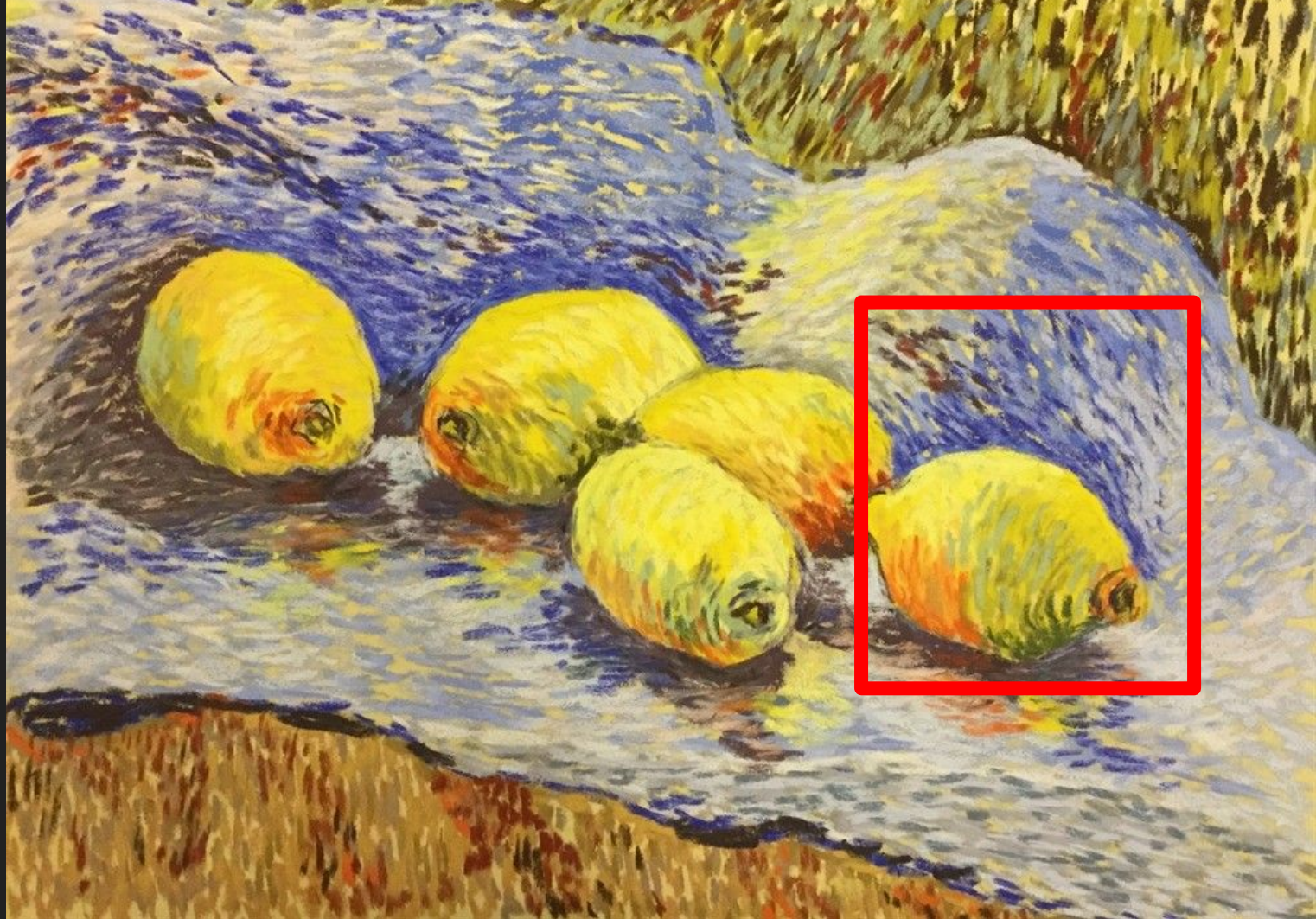
Why does van gogh's
lemons feel round?
explain



Vincent Van Gogh - The Complete Works

courtesy of www.vincent-van-gogh-gallery.org

Why does
the lemon
feel like a
different
from apart
from the
fabric
behind it?
How did he
do it?



How
does the
brush
strokes
affect the
rendering
of this
piece?

