

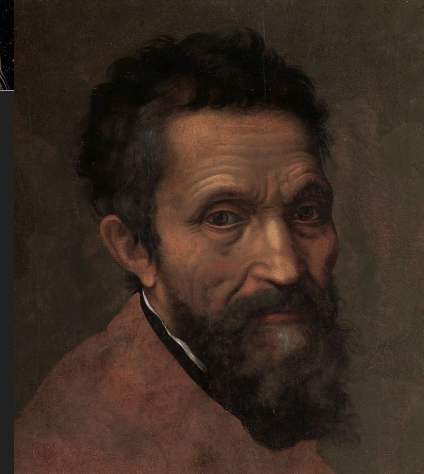
Portrait Features

Mrs Ras's Final Project

In fine art, a portrait is a rendering of an Animated Living things, in which the face is the main theme. What is important to capture in a portrait is the likeness of the Facial features ie the Eyes, Nose, Mouth etc.

The traditions of portraiture in the West extend back to antiquity and particularly to ancient Greece and Rome, where lifelike depictions of distinguished men and women appeared in sculpture and on coins

The Renaissance saw the re-invention of portraiture in its modern sense and is a pivotal moment in the history of the genre. The renaissance what the time with the human form/ face was being studied and began being painted in such high Photo realism. Such artist of this time were Botticelli, Leonardo da Vinci, and Michelangelo



What is important to capture in a portrait is the likeness of the Facial features ie the Eyes, Nose, Mouth etc. without this marking the paintings out be tan ovals.

Your task

Create 3 digitally painted facial features and compose them on one picture like seen here. You can use whatever method you like for painting them. You can draw and scan an outline or find a picture and use the find edges tool in photoshop to create your outline. Your painting must resemble the facial features in the end. You should remember your value, texture and color.

You may not use a picture of a painting to cut and paste and display as your own, (this is plagiarism and will get you a Zero)