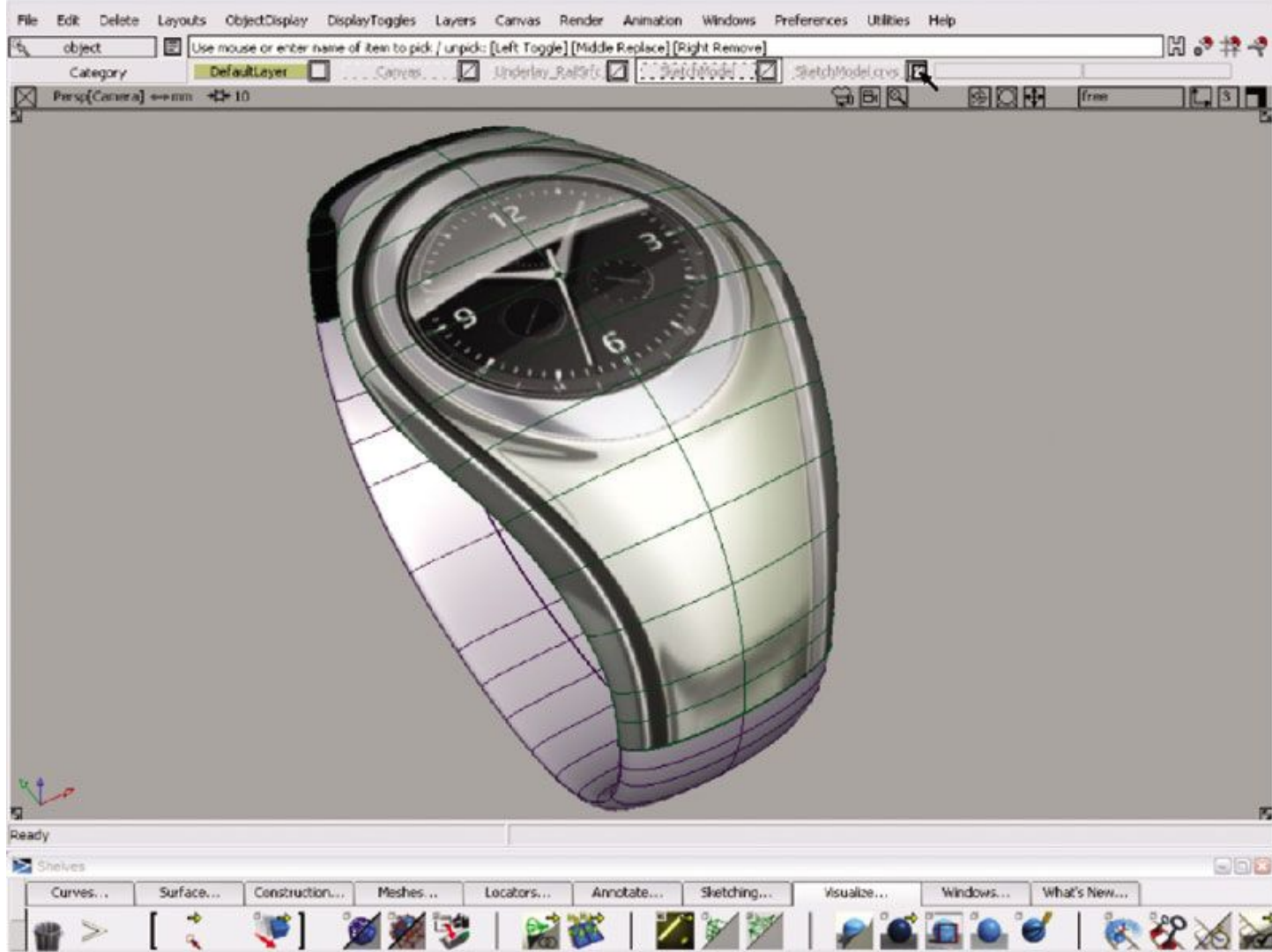


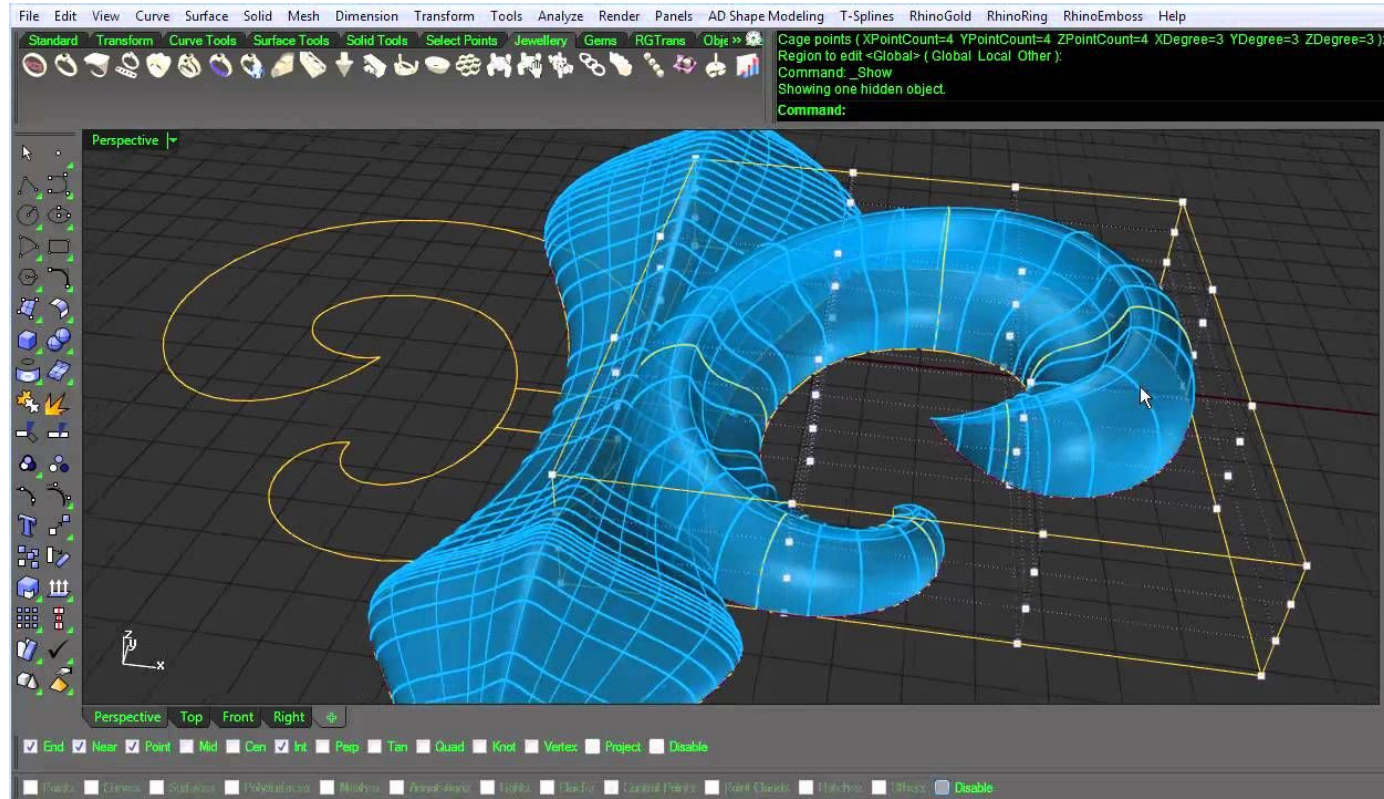
# Lines with purpose

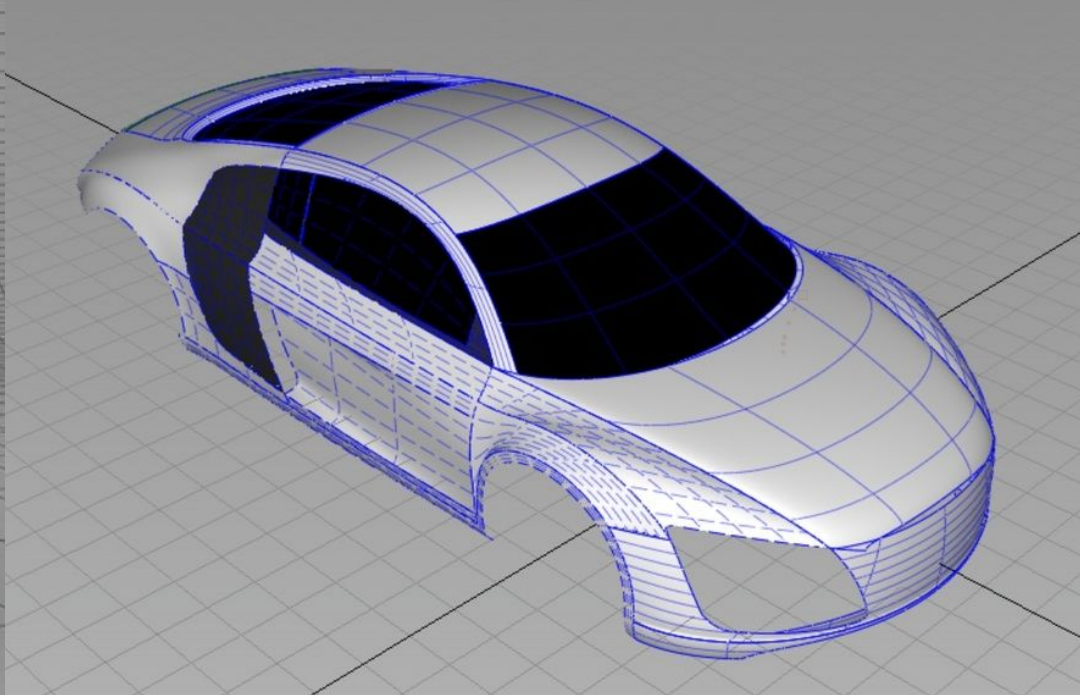
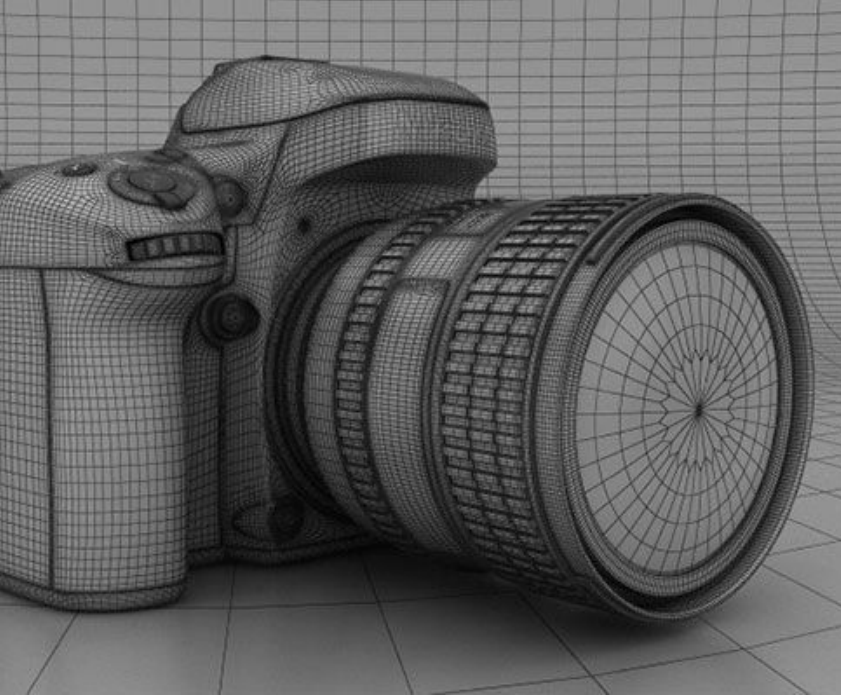
Ras

What is  
this an  
example  
of?



What is purpose  
of 3d modeling?  
What are they  
trying to render  
ie create? Hint.  
is it flat?

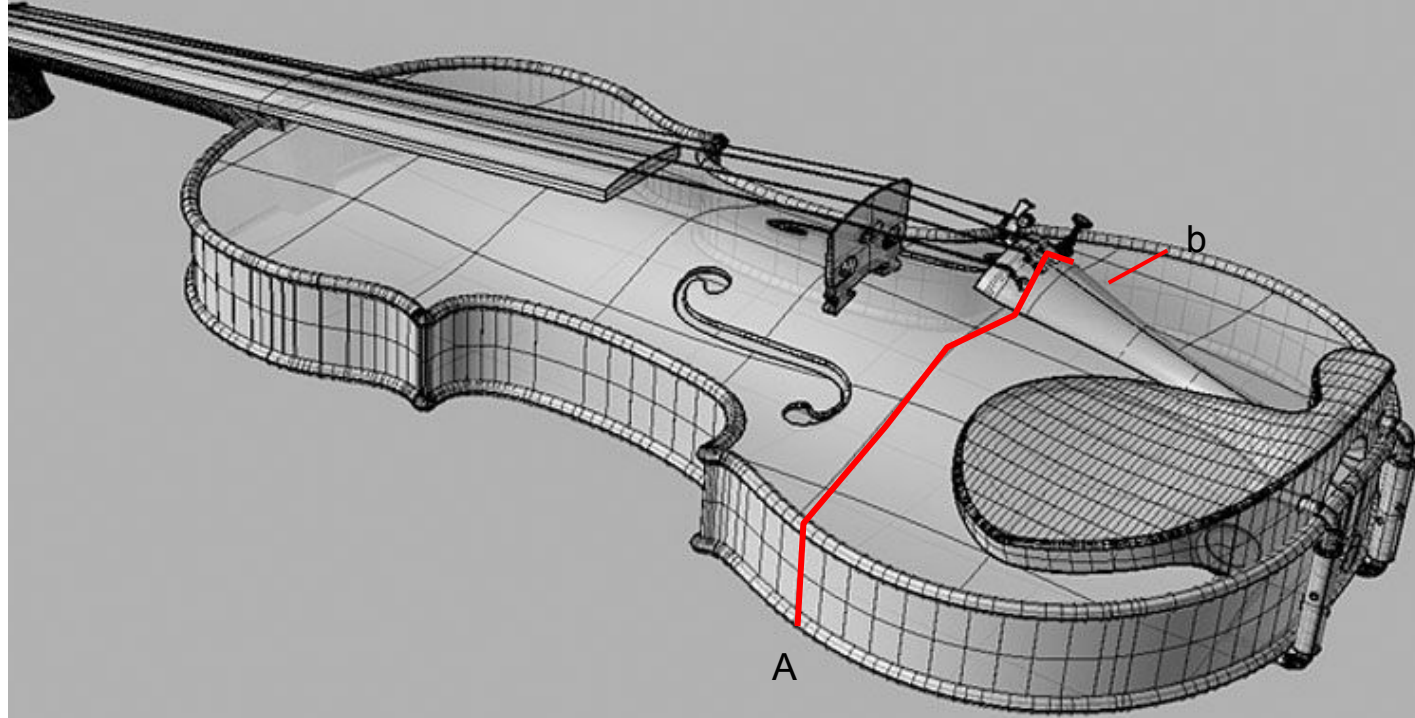




What is the purpose of these lines? It kind of looks like a mesh, what information is it telling the computer about the surfaces it lies on?

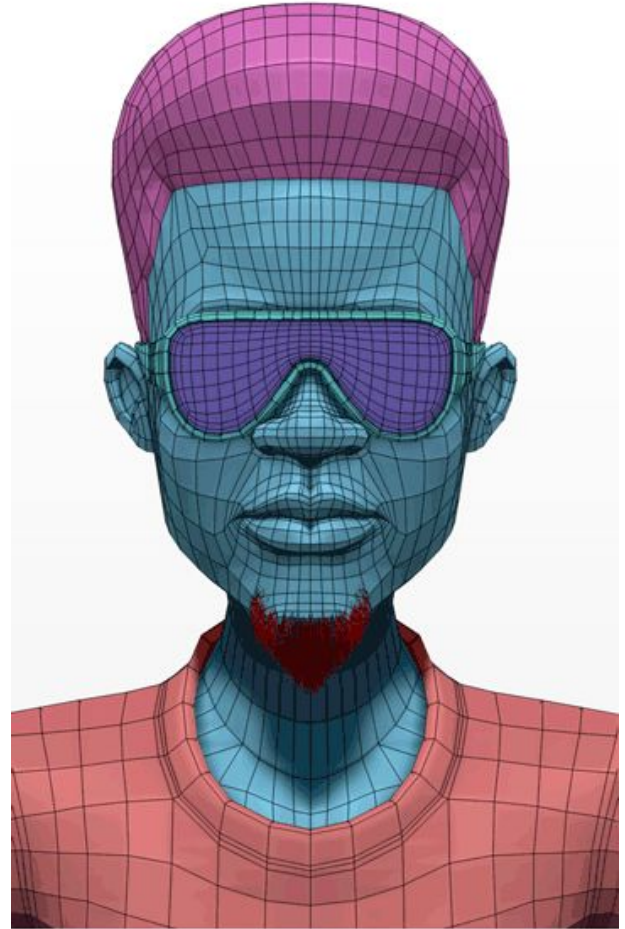
Describe the form that the red line is following.

Describe the path of the line like giving directions from point A to point B. where does it turn, is there a bump anywhere?



What industries might use this wireframing to create 3d models?

What is the primary purpose for this technology?



Is this art?

why



How about  
this?

