

Minimalistic Emotions

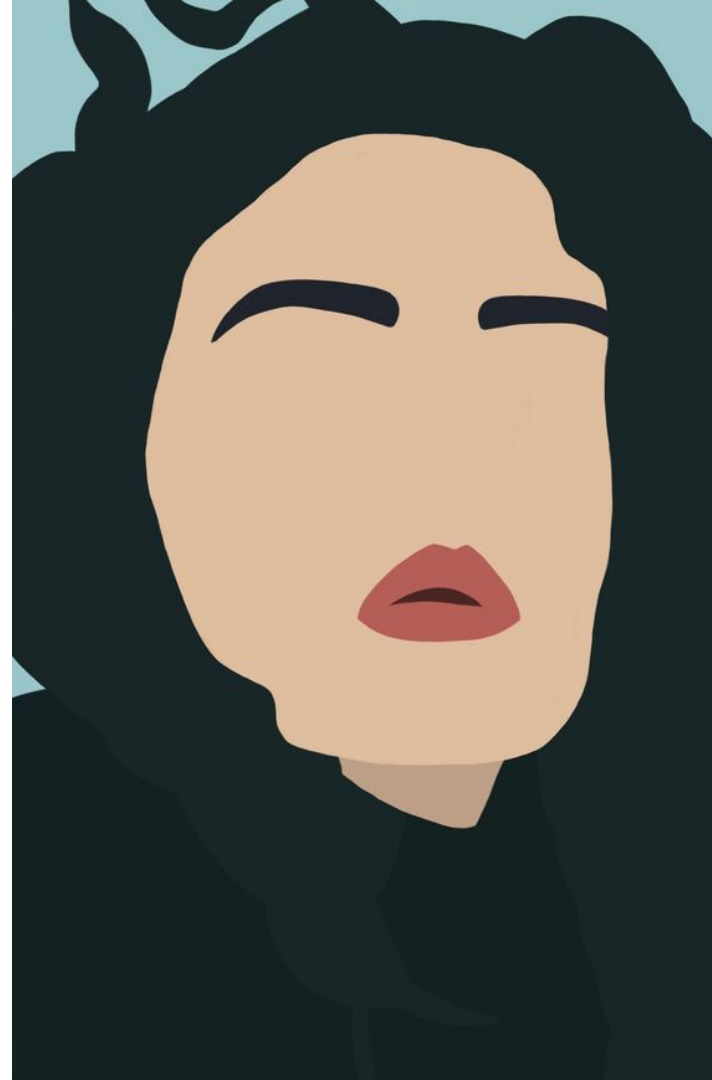
Mrs ras

Is it possible to read a person's emotions without seeing all of their face?

What part of a person's face do you think is the most expressive? Eyes nose mouth etc?



What emotion do you think portrait shows? Why?



What emotion do you think portrait show? Why?



What emotion do you think portrait show? Why?



What is the
minimalism style?

How would YOU
describe the
minimalism visual.



Minimalism is about taking something complicated and breaking it down into its most simplest parts. Emotions are big and complicated expressions. Our task is to take an emotion and break it down communicate in its essence. Finding out what is that essence or important piece is the

Look at the following portraits first figure out what emotion is being displayed and then pick out what part of the portrait, is the most expressive ie important

